

FOR LEASE

**Office/Flex Space
In the heart of
Middlebury**

1 suite available

535 SF



**10 MERCHANTS ROW
MIDDLEBURY, VERMONT**



FERNANDO CRESTA

O: 802.222.0607

C: 802.343.1305

E: FCRESTA@NEDDERE.COM

JAEGER NEDDE

O: 802.735.0753

C: 802.777.0732

E: JNEDDE@NEDDERE.COM

OVERVIEW

Don't miss the chance to feature your business right in the hustle and bustle of downtown Middlebury, walking distance to Middlebury College with beautiful river views. Located in the historic Battell Block building, this space features a mixture of individual offices, larger meeting spaces, and multiple different suite configurations.

The property is serviced by local property management and located in a perfect downtown location. Previously home to Community College of Vermont, this gorgeous office/flex space has many possibilities.

The second and third floors of the Battell Block are upscale apartments.

RATE AND SIZE(S)

SIZE

Individual suites.

Rates are gross + electric.

SUITES	SIZE	RATE
#220	535 SF	\$800
#223	1,348 SF	Leased
#224	225 SF	Leased
#225	400 SF	Leased
#226	351 SF	Leased
#227	741 SF	Leased



BATTELL BLOCK | 10 MERCHANTS ROW, MIDDLEBURY, VERMONT

PHOTOS



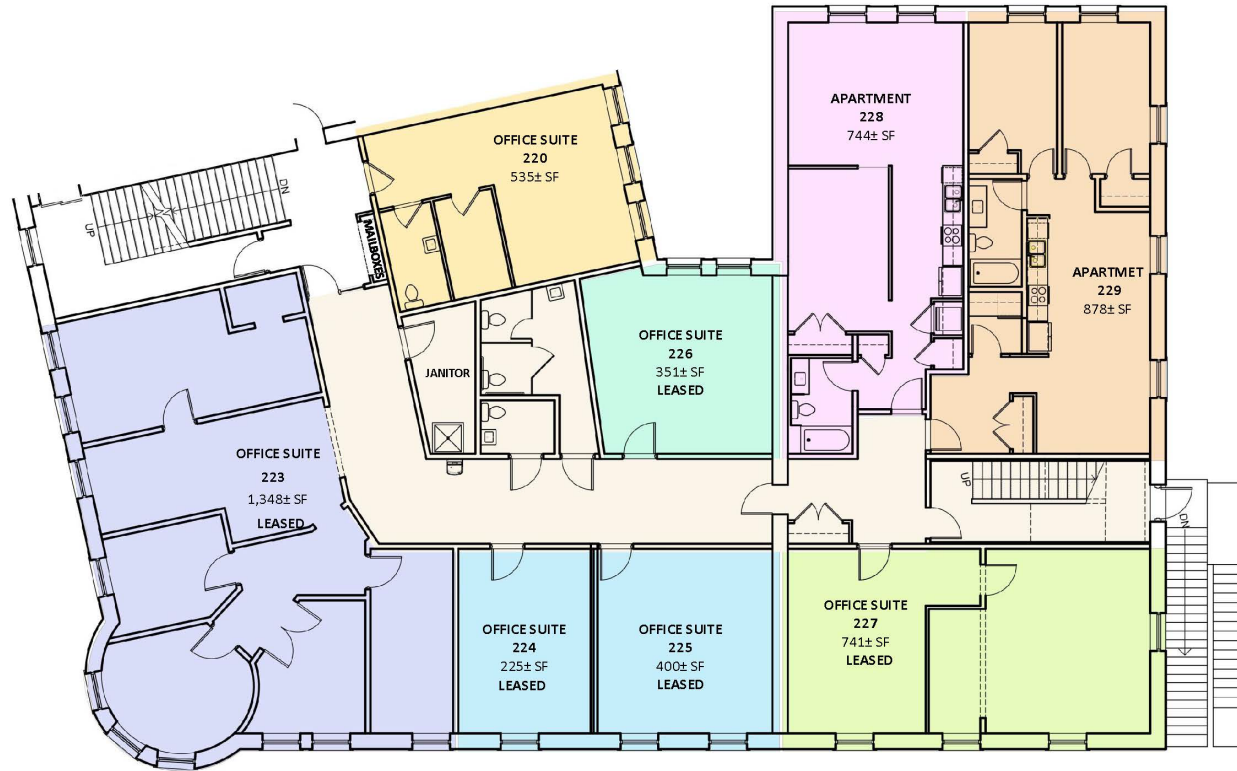
BATELL BLOCK | 10 MERCHANTS ROW, MIDDLEBURY, VERMONT

PHOTOS



BATTELL BLOCK | 10 MERCHANTS ROW, MIDDLEBURY, VERMONT

FLOORPLANS



Battell Block | Middlebury, VT
Second Floor Office Suites SCALE: 3/32" = 1'-0"

youkel [architecture + development]

Po box 1503, stowe, Vermont 05672
t: 802.864.9696 www.youkel.com



BATTELL BLOCK | 10 MERCHANTS ROW, MIDDLEBURY, VERMONT

July 29, 2025

1